

ROYAL
BELGIAN
SAILING
CLUB



150
JAAR / ANS

NAVAL PARADE – ZEEBRUGGE
ROYAL BELGIAN SAILING CLUB
150TH ANNIVERSARY

30 JUNE 2013

PROGRAM

VERSION 5 – 17/05/2013

Zeebrugge, May 1st, 2013

Dear Fellow Sailor,

On behalf of the Royal Belgian Sailing Club, it is my pleasure to invite our members, yachtsmen and their crew to participate at the Naval Parade *'150th Anniversary of the Royal Belgian Sailing Club'*.

The tradition of Naval Parade or "Admiraal zeilen" in Dutch goes back to the Golden Ages in the Low Countries.

After every battle at sea the Admiral used to make an inventory of ships, crew and soldiers.

Ships, grouped per squadron, sailed in straight line along the Admiralty ship, the crew clearly lined up on deck so that the Admiral could evaluate the actual fleet's situation.

Obviously ships couldn't sail along the Admiralty ship without a salute which consisted of lowering the foresail and dipping the Ensign at the very moment each ship sailed by the Admiralty ship.

The Naval Parade in the RBSC 150th Jubilee year is in the first place a tribute to all yachts and boats flying the Royal Belgian Sailing Club burgee.

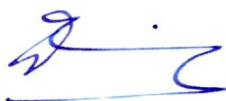
All sailing and motor yachts, dinghies, catamarans, kites and surfers of our club and all fellow sailing clubs are kindly invited to participate at this event.

This Naval Parade, in the presence of Their Royal Highnesses Prince Philip and Princess Mathilde, shall take place in Zeebrugge on Sunday 30th of June. It will be followed by a reception given in the Alberta clubhouse in Zeebrugge.

You are kindly invited to announce as soon as possible your participation at this solemn but very important moment in our club's history.

We look forward to welcome you in Zeebrugge on the 30th June 2013.

Yours sincerely,



André Annicq
Commodore
Royal Belgian Sailing Club

1. ENTRIES

On Sunday 30th June 2013 the RBSC will organise a Naval Parade in the harbour of Zeebrugge and off the coast of Knokke-Heist to celebrate the 150th anniversary of the club.

All sailing yachts, motor yachts, dinghies, catamarans, windsurfers and kites of the club and befriended clubs are invited to participate!

2. PROGRAM – SCHEDULE

FRIDAY 28 June 2013:

17.00h Alberta clubhouse briefing LVR and Naval Parade (only leader ships)

SUNDAY 30 June 2013:

09.00h	Picking up sequential numbers at the harbourmaster office (only sail & motor yachts)
09.30h	Sail and motor yachts leave the harbour
10.15h	Briefing dinghies, catamarans, kites & surfers at the beachclubs
10.30h	Dinghies, catamarans and surfers leave the beaches
11.00h	Meeting point MOW 2 opposite Knokke-Heist (see course)
11.30 – 12.30h	Naval Parade off the coast of Knokke-Heist
13.30h	Sail and motor yachts meeting point at the West entrance of the harbour
14.20	Commodore and spouse and Board Members of the Royal Belgian Sailing Club welcome H.R.H. Prince Philippe and Princess Mathilde outside the Alberta clubhouse and accompany them to the stage on the terrace where they will salute the fleet.
14.30h	The RBSC fleet sail by the clubhouse Alberta and salute H.R.H Prince Philippe and HRH Princess Mathilde
15.00h	Honorary members welcome H.R.H Prince Philippe and Princess Mathilde
15.15h	Youth members (especially the youth racing teams and the RBSC elite sailors) welcome H.R.H Prince Philippe and Princess Mathilde
15.30h - 15.45	Captains of the RBSC fleet and RBSC Members welcome H.R.H Prince Philippe and Princess Mathilde
16.00 – 1700h	Prize giving ceremony of the Genisol Light Vessel Race 150 th Anniversary and Reception at the clubhouse Alberta

3. LOCATION



Tidal stream	dir	force
HW 0 07:38	064	1
HW + 1 08:38	053	1
HW + 2 09:38	041	0,7
HW + 3 10:38	011	0,5
HW + 4 11:38	310	0,6
HW + 5 12:38	265	0,7
HW + 6 13:38	244	0,8

DISTANCE FROM THE MARINA TOT MOW 2 (N51 21.758 E3 17.404) = 5.8 NM

HIGH WATER = 7.38h LOW WATER = 13.52h



DISTANCE FROM THE MEETING POINT (N51 21.858 E3 10.630) TO THE CLUBHOUSE ALBERTA = 2.7 NM

4. COURSE

NAVAL PARADE AT SEA IN FRONT OF KNOCKE-HEIST:

-Wait in the Holding Area

-GIF (organising vessel) gives flag signals supported by very loud sound signals for the different starts per squadron and supported on Ch. 72

Start Sequence:

1*Flag **Red** kite-surfers and surfers

4*Flag White sailing yachts

2*Flag **Yellow** dinghies

5*Flag **Green** motor yachts

3*Flag **Blue** catamarans

Each Squadron will be led by a "leading vessel" (name of the leading vessel will be communicated later)

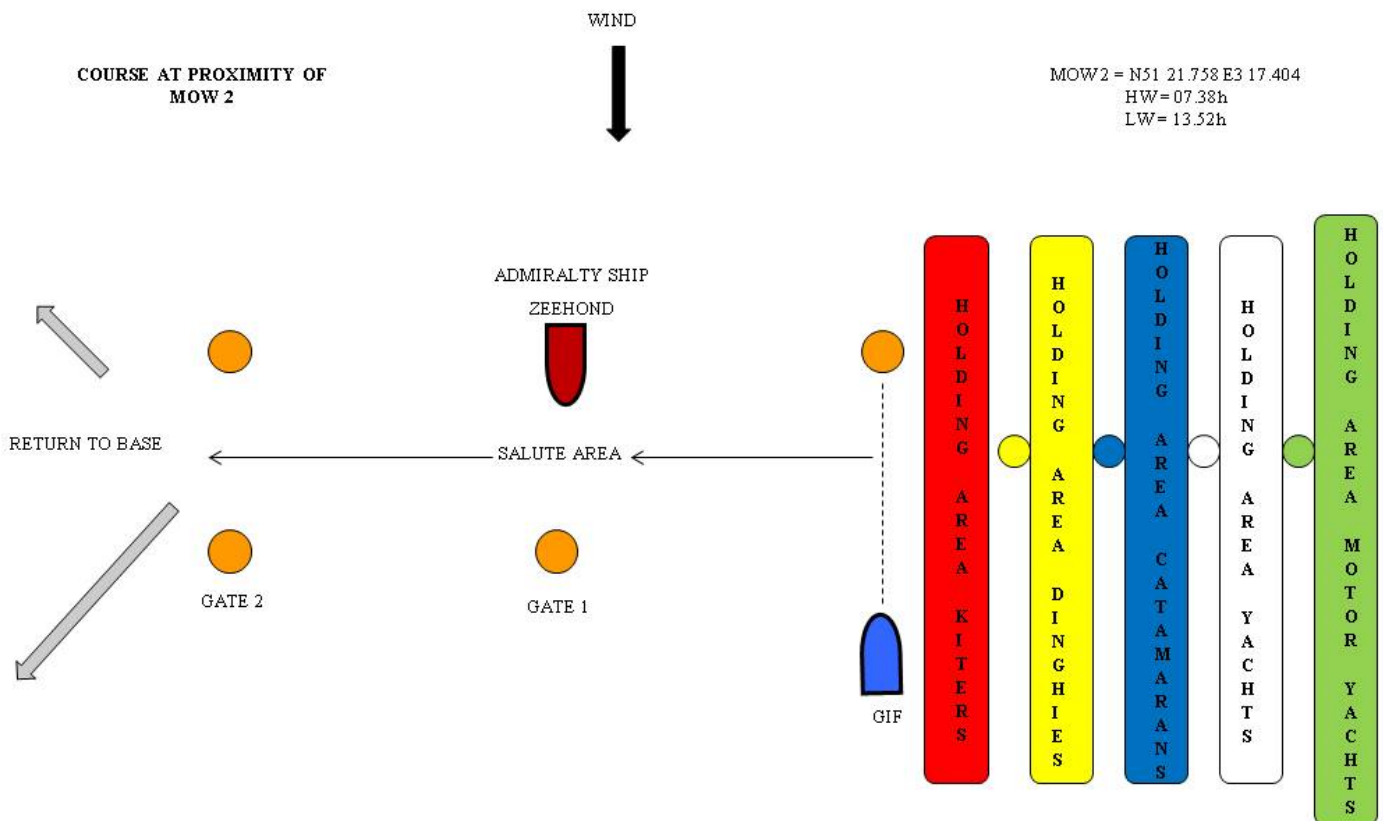
-Cross line between GIF and orange buoy

-Cross line GATE 1 between Orange buoy and Admiralty ship - SALUTE

When passing the Admiralty ship the headsail should be lowered or furled or the mainsail should be loosened. The Admiralty ship may give a saluting cannon's shot when the squadron leader of each class passes as well as a water screen by it's monitors.

-Cross line GATE 2 between 2 Orange buoys and return to base

-Ships in keel line, distance 4-5 boat lengths, average speed 4 knots



NAVAL PARADE IN THE HARBOUR:

Only for sail and motor yachts, no dinghies, catamarans, kites and windsurfers admitted in or in front of the harbour!

- Assembly/marshalling area: in front of Zeebrugge harbour at the West side (see point 3 location)
- Picking order to be maintained at all times (numbers will be delivered to the yachts on Sunday 09.00h)
- Gif will give the green light to enter harbour on Ch. 72
- Entering the harbour at very slow speed “4-5 knots” in keel line, 3-4 boat lengths apart, KEEP TO STARBOARD!!!
- Belgian flag with crown on flagpole astern, club burgee at portside spreader/halyard (Or on top of the mast (sloops) or on top of the mizzen mast (ketch). No other flags. (Board members should fly their functional burgee preferably on top of the mast)

5. ETIQUETTE

All ships during the Naval Parade at sea in front of Knokke-Heist (East of MOW2):

- Sailing yachts and motor yachts should only fly their Belgian Ensign with crown astern and the club burgee at the portside spreader/halyard (or on top of the mast (for sloops) or mizzen mast (for ketch)
- Catamarans and Dinghies club burgee at portside shroud
- No other flags
- When sailing past the Admiralty ship the headsail should be lowered or furled or the mainsail should be loosened.

All ships during the naval parade in the harbour (when sailing by the Alberta clubhouse) (only for sail and motor yachts):

- Sailing yachts and motor yachts should only fly their Belgian Ensign with crown astern and the club burgee at the portside spreader/halyard (or on top of the mast (for sloops) or mizzen mast (for ketch)
 - When sailing by HRH’s and the Alberta flagstaff, the flagpole with the Belgian ensign to be taken out of his holder at the stern, dip the Ensign with one tip in the water and reposition the flagpole.
- All crew stands up, hats, caps, headgear off, look left, middle finger on trouser’s seam.

All ships in harbour:

- Only when safely moored alongside, not when under way or at anchor
- Ships’ dress code or colours (grand pavois) from stem via top of mast(s) to stern :
 - International signal code flags, numerals and substitutes.
 - From Friday till Sunday from sunrise till sunset.
 - Belgian Ensign with crown at stern, club burgee at portside spreader/halyard. (or on top of the mast (for sloops) or mizzen mast (for ketch)
- No other flags.

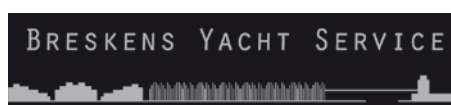
6. FURTHER INFORMATION

Royal Belgian Sailing Club Marina Zeebrugge
Rederskaai 1
8390 Zeebrugge - Belgium
E-mail: havenmeester@rbsc.be
Tel: +32 50 54 49 03 / Fax: +32 50 55 26 05
Mobile: +32 496 78 90 53

WITH MANY THANKS TO ALL OUR SPONSORS!!!!



marine electronics for sail & power
www.etbpauldelange.be



AltéAd Devriendt nv/sa
UITZONDERLIJK VERVOER & LOGISTIEK
TRANSPORT ET LOGISTIQUE DE L'EXCEPTIONNEL